

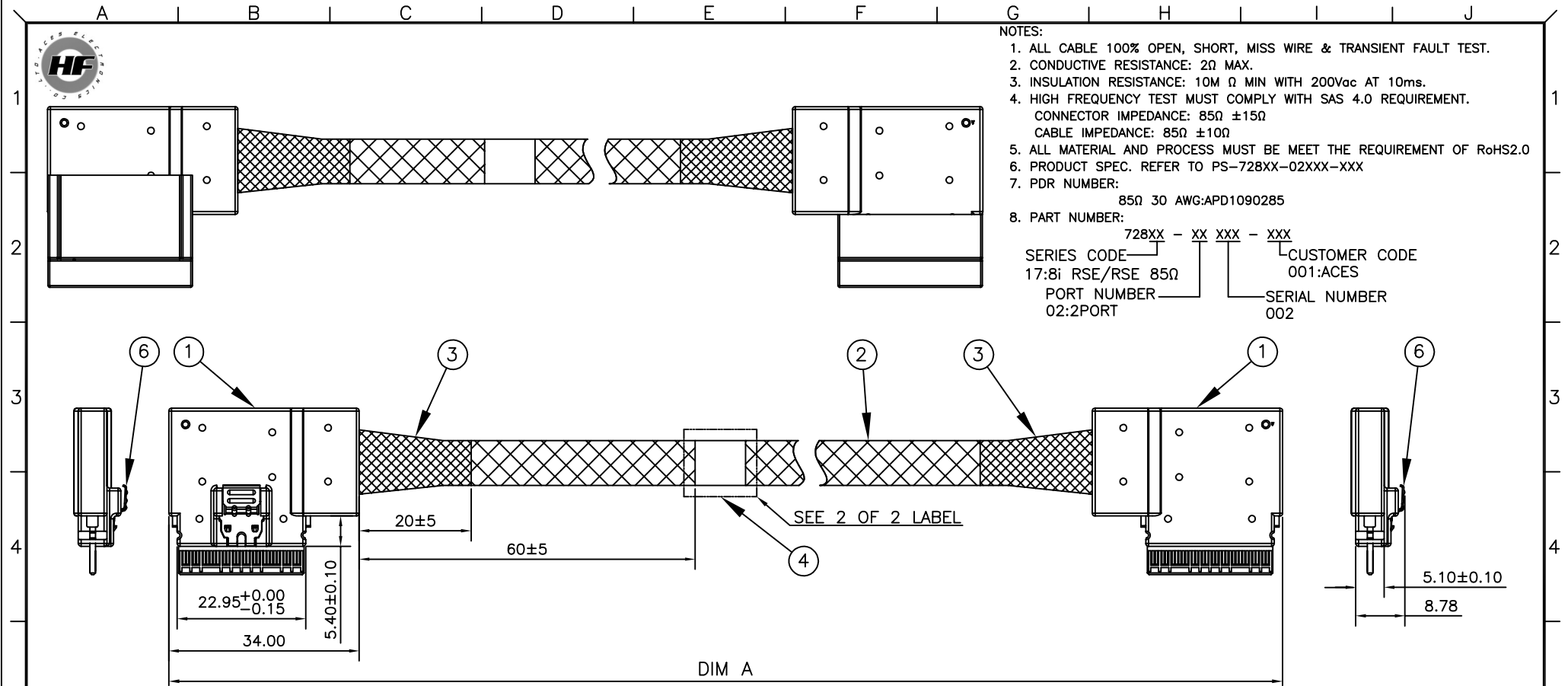


NOTES:

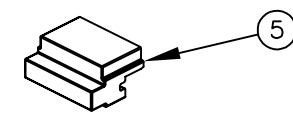
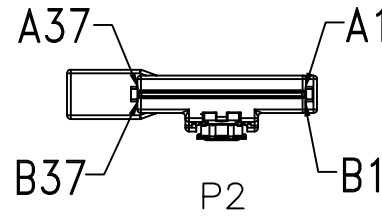
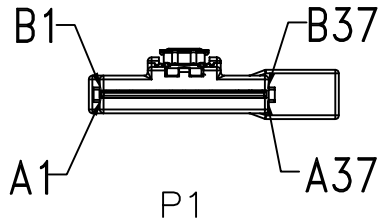
1. ALL CABLE 100% OPEN, SHORT, MISS WIRE & TRANSIENT FAULT TEST.
2. CONDUCTIVE RESISTANCE: 2Ω MAX.
3. INSULATION RESISTANCE: 10M Ω MIN WITH 200Vac AT 10ms.
4. HIGH FREQUENCY TEST MUST COMPLY WITH SAS 4.0 REQUIREMENT.
CONNECTOR IMPEDANCE: 85Ω ±15Ω
CABLE IMPEDANCE: 85Ω ±10Ω
5. ALL MATERIAL AND PROCESS MUST MEET THE REQUIREMENT OF RoHS2.0
6. PRODUCT SPEC. REFER TO PS-728XX-02XXX-XXX
7. PDR NUMBER:
85Ω 30 AWG:APD1090285
8. PART NUMBER:
728XX - XX XXX - XXX

SERIES CODE 17:8i RSE/RSE 85Ω
PORT NUMBER 02:2PORT

CUSTOMER CODE 001:ACES
SERIAL NUMBER 002



DIM A



| ITEM | DESCRIPTION | Q'TY | UNIT |
|------|--|------|------|
| 1 | SLIMLINE 8i RIGHT SIDE 85Ω & SLIMLINE 8i RIGHT SIDE OUT 85Ω. | 2 | PCS |
| 2 | EXPANDO TUBE. | A/R | MM |
| 3 | ACETATE TAPE COLOR: BLACK. | A/R | MM |
| 4 | LABEL. | A/R | MM |
| 5 | DUST COVER, PE, COLOR: WHITE. | 2 | PCS |
| 6 | LATCH. | 2 | PCS |

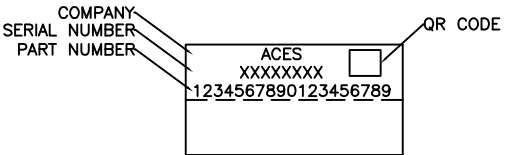
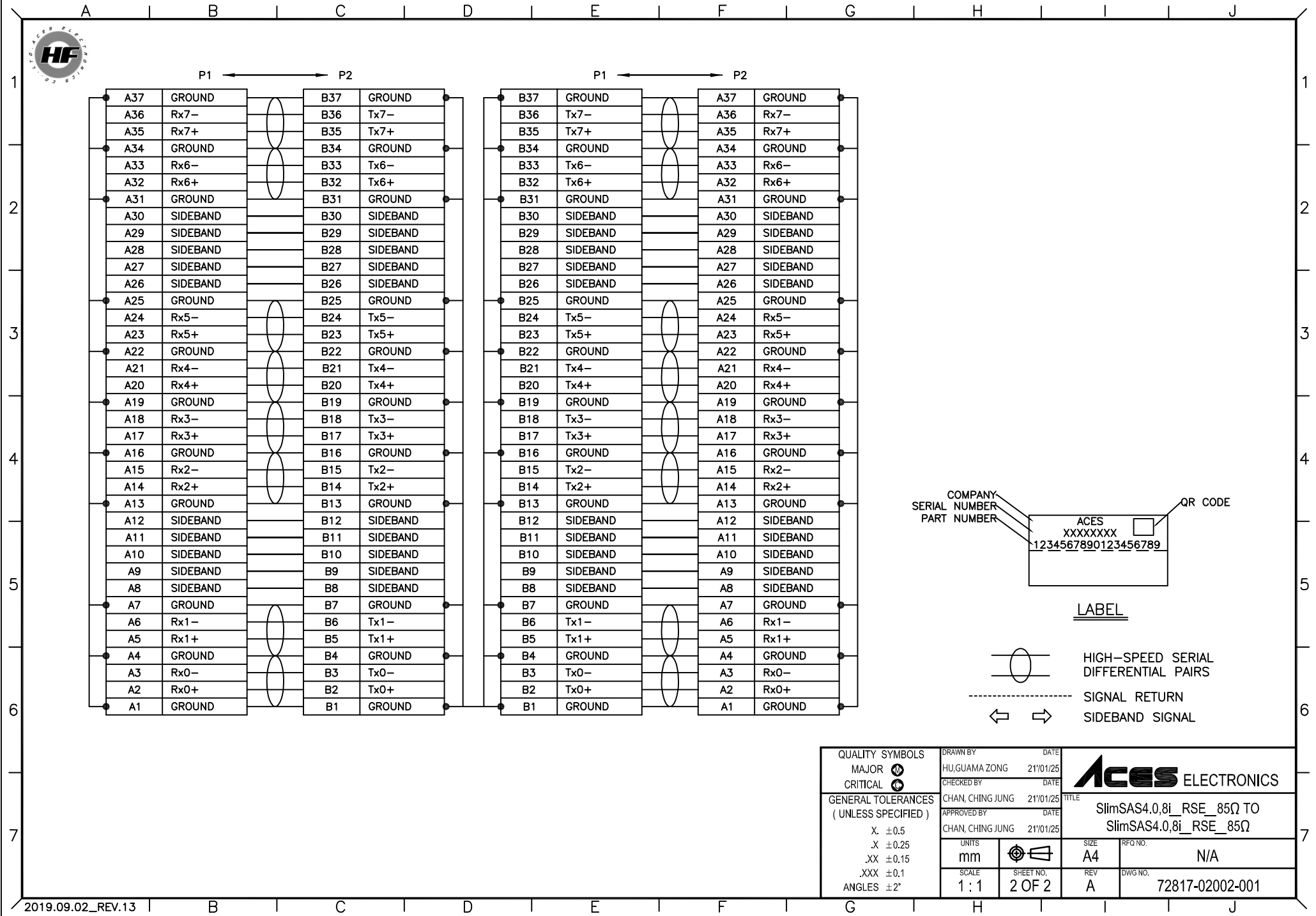
| | |
|-----------------|-------------|
| 72817-02002-001 | PART NUMBER |
| 1000±15 | DIM A |

| | | |
|---------------------------------------|------------------|-----------------|
| QUALITY SYMBOLS | DRAWN BY | DATE |
| MAJOR Ⓢ | HU, GUAMA ZONG | 21/01/25 |
| CRITICAL Ⓢ | CHECKED BY | DATE |
| GENERAL TOLERANCES (UNLESS SPECIFIED) | CHAN, CHING JUNG | 21/01/25 |
| X. ±0.5 | APPROVED BY | DATE |
| .X ±0.25 | CHAN, CHING JUNG | 21/01/25 |
| .XX ±0.15 | UNITS | SIZE |
| .XXX ±0.1 | mm | A4 |
| ANGLES ±2° | SCALE | SHEET NO. |
| | 1:1 | 1 OF 2 |
| | REV | DWG NO. |
| | A | 72817-02002-001 |

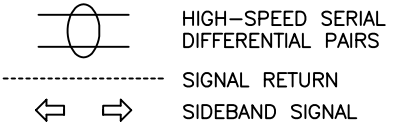
ACES ELECTRONICS

TITLE: SlimSAS4.0,8i_RSE_85Ω TO SlimSAS4.0,8i_RSE_85Ω

RFQ NO. N/A



LABEL



| | | | |
|---|------------------|----------|--|
| QUALITY SYMBOLS MAJOR Ⓢ CRITICAL Ⓢ | DRAWN BY | DATE | |
| | HU, GUAMA ZONG | 21/01/25 | |
| GENERAL TOLERANCES (UNLESS SPECIFIED) X. ±0.5 .X ±0.25 .XX ±0.15 .XXX ±0.1 ANGLES ±2° | CHECKED BY | DATE | TITLE SlimSAS4.0,8i_RSE_85Ω TO SlimSAS4.0,8i_RSE_85Ω |
| | CHAN, CHING JUNG | 21/01/25 | |
| | APPROVED BY | DATE | |
| | CHAN, CHING JUNG | 21/01/25 | |
| | UNITS | SIZE | RFQ NO. |
| mm | | A4 | N/A |
| SCALE | SHEET NO. | REV | DWG NO. |
| 1 : 1 | 2 OF 2 | A | 72817-02002-001 |